



**WEBINAR**



# Tips & Tricks for More Effective Searches

**Presented by ESHA Research**

Wednesday, December 13, 2017

11:00 AM PDT | 1:00 PM CDT | 2:00 PM EDT



# ESHA Research

ESHA Research was established in 1981 as one of the very first nutrition software solutions. Today, we provide solutions for recipe and product development, labeling, nutritional analysis, and regulatory compliance.

## **ESHA Services and Software Solutions**

- Genesis R&D<sup>®</sup> Food Formulation
- Genesis R&D<sup>®</sup> Supplement Formulation
- Food Processor<sup>®</sup> Nutrition & Diet Analysis
- Consulting Services

Our mission is to help remove the complexity of product development and regulatory compliance for the food, beverage, and supplement industry through software, services, and nutritional databases.

# Genesis R&D Food



Genesis R&D was released in 1991 and is designed to help you manage the challenges faced in the food industry.

- ✓ Product Development
- ✓ Formulation Analysis
- ✓ Reformulation & Conceptualization
- ✓ Costing
- ✓ Regulatory Compliance



# Upcoming Webinars



## **Menu Labeling Draft Guidance Overview | Jan 17, 2018**

In five short months, restaurants, supermarkets, convenience stores, and movie theaters will be required to post calories on menu items. During this webinar, we provide a brief overview of the FDA Menu Labeling regulations, discuss labeling best practices, and demonstrate how the Food Menu Report in Genesis R&D can help you with compliance.

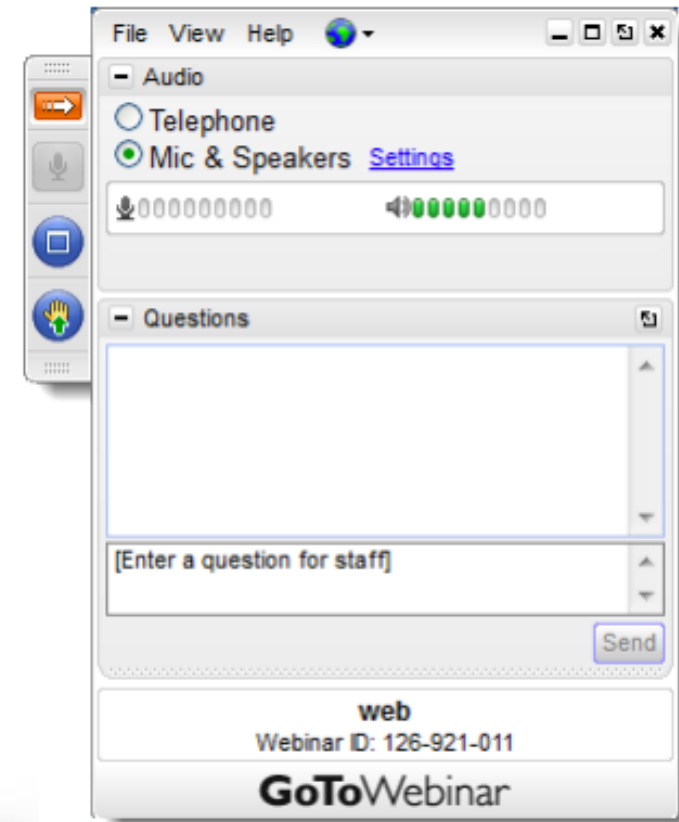
## **Recipe Development Management, Making Groups Work for You | Jan 30, 2018**

Using Groups is the most efficient way to organize, manage, and control access to your ingredients, recipes, and food menus. During this webinar, we will discuss the benefits of using Groups and provide examples of how you can use Groups to simplify your workload, sort recipes by development stage, assign access, and more.

To register or view archived webinars please visit: [www.esharesearch.com/news-events/webinars](http://www.esharesearch.com/news-events/webinars)

# Please Note!

- ✓ The webinar is being recorded
- ✓ All webinars available on our website
- ✓ Submit your questions in the GoToWebinar control panel







# Agenda

- Searches Overview
  - Search Return Results
  - Function Keys
  - Additional Search Considerations
- Searching in Genesis R&D
  - Preferences and Displays
  - Detailed Searches and Examples
- Best Practices
- Q&A



# Search Return Results

- Frequently used items
- User-added items
- Remaining matches
- 400 items are displayed by default





# Broad Match Searching

The primary search method is by ingredient/recipe name or description. These searches will return matches found in names, codes, products, supplier, etc.

- Partial Word Search
- Whole Word Search
- Supplier/Product Search
- Code Search

The screenshot shows a search interface with a search bar containing 'water, usda'. Below the search bar, it indicates 'Total Items = 309'. A list of search results is displayed, including 'water, municipal tap', 'coconut water, unswe', 'WATER', 'coconut water, fresh', 'coconut water, fresh, yield per fruit', 'coconut water, fruit flavor, with vitamin C, unsweetened', and 'flavored water, diet, fruit flavored, pouch'. A table of results is also visible, with columns for product name, code, and supplier.

Product Name	Code	Supplier
water, municipal tap		USDA SR-28
coconut water, unswe		USDA SR-28
WATER		Standard
coconut water, fresh		USDA SR-28
coconut water, fresh, yield per fruit	62900	12119 USDA
coconut water, fruit flavor, with vitamin C, unsweetened	67096	14001 USDA
flavored water, diet, fruit flavored, pouch	24045	14637 USDA





# Broad Match Searching

## Partial Word Search

The program locates all food items containing the groups of letters entered, regardless of where the search terms appear.

### Examples

- “broc” for “broccoli”
- “cook whi rice” for “cooked white rice”
- “oran ju froz conc” for orange juice frozen concentrate



# Broad Match Searching

## Whole Word Search

The whole word search (also known as “Dot Search”) limits the search to only whole words. To perform a whole word search enter a period (.) after the name.

Searching for “Tea” will show:

- “sprouts, soybean, steamed”
- “beef, flank steak”

vs.

Searching for “Tea.” will show:

- “tea leaves”
- “iced tea”



# Broad Match Searching

## Product/Supplier Search

To search specific products/suppliers items, type the full name or partial name of the product/supplier. You can also use the product/supplier search in combination with the name.

### Example

- Product: Nabisco
- Supplier: Mondelez



# Broad Match Searching

## Code Searches

- User Code
- ESHA Code
- Government Code

Search by:

Name

Gov. Code

ESHA Code

User Code

26007



# Filtered Searches

- More Search (F3)
- Name Only Search (F4)
- Nutrient Search (F5)
- User Code Search (F6)
- Recipe Only Search (F7)
- Name/Code Search (F8)
- Government Code Search (F11)
- ***Where Used Search***





# More Search – F3

Refine search results by Name, User Code, ESHA Code or Government Code and by Groups at the same time.

More Search Options

Search by:

Name

Gov. Code

ESHA Code

User Code

Search by Groups:

Select...

Clear

Include ALL groups (AND)

Include ANY group (OR)

Search Cancel

Search specifically by Name, Gov. Code, ESHA Code, or User Code. You may also specify certain groups to search for.





# F5 – Nutrient Search

This feature allows you to search for ingredients based on the nutrients in the ingredient.

## Example

- Protein  $\geq$  10

Nutrients		Value
Protein (g)	$\geq$	10

You may select up to 3 nutrients to search for. Results consist of data directly from the database and are not normalized.

Include ALL Groups (AND)  
 Include ANY Group (OR)



# Where Used Search

This feature is useful when searching for Recipes containing a specific ingredient.

More Search Options

Search specifically by Name, Gov. Code, ESHA Code, or User Code. You may also specify certain groups to search for.

Search by:

- Name
- Gov. Code
- ESHA Code
- User Code

Search by Groups:

Select... [Dropdown]

Clear

- Include ALL groups (AND)
- Include ANY group (OR)

Search within items for matches to the above criteria.

Search Cancel



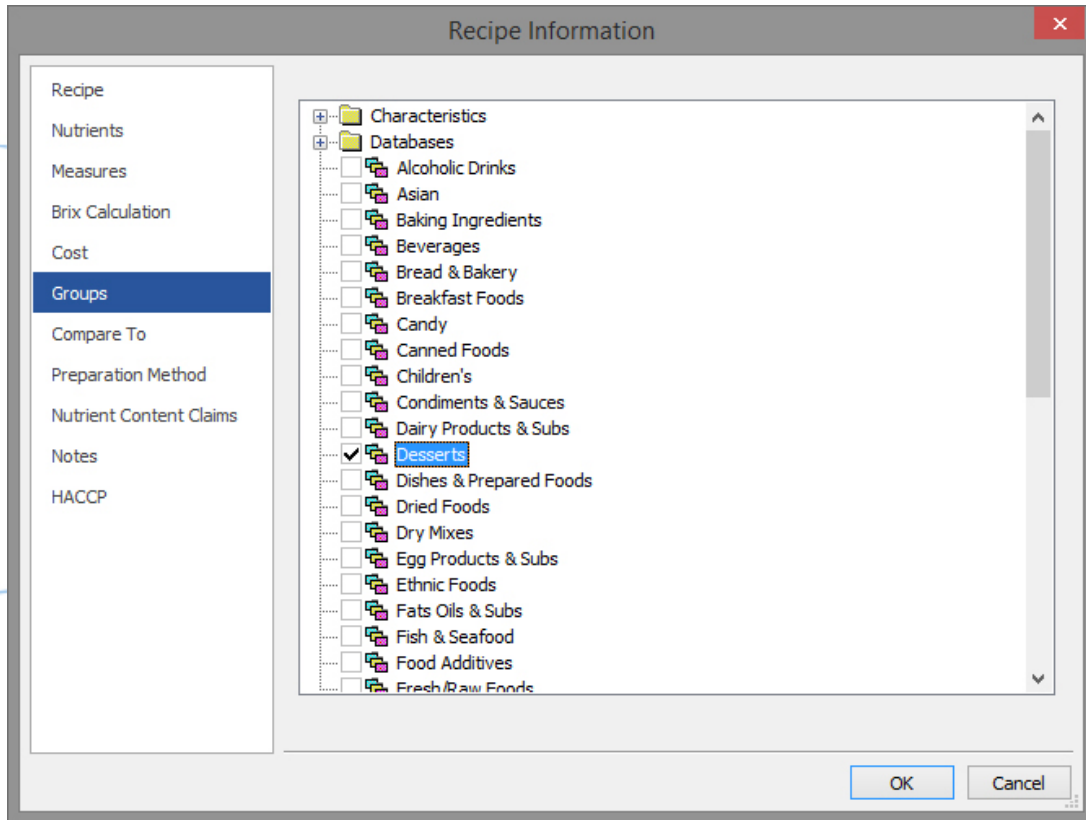
# Groups

Using Groups is one of the most efficient ways to organize your recipes and ingredients.

- **Searching:** You can search to include or exclude by Group.
- **Exporting:** Groups can be used to filter the exported records.
- **ESHA Security:** Groups are used to designate varying levels of read/write access permissions to records in the database.
- **Genesis API:** Information in published Groups can be sent to external and internal interfaces with the API.



# Use Cases for Groups



- Identify Characteristic/Trait
  - Organic
  - Vegan
  - Protein
- Identify Development Stage
  - Testing/Development
  - Approved
  - Under Review
  - Archived/Obsolete



# Best Practices

- Familiarize yourself with your organization's database naming conventions.
- Consider your organization's naming conventions when adding Ingredients and Recipes.
- Establish consistency with your internal naming conventions so that your team members can find like ingredients as well as different versions of Recipes.



# Genesis R&D Training

## **Genesis Professional Training | Jan 10-11, 2018 | Oak Brook, IL**

This training session covers the fundamentals of the Genesis R&D Food program: creating ingredients, building recipes/formulas, obtaining nutrition analysis, analysis reporting, best practices, and basic labeling features.

## **Genesis Professional + Menu Label Training | Jan 23-24, 2018 | Oak Brook, IL**

This training session covers ingredient creation and recipe/menu building, best practices, and analysis reporting specific to restaurants, grocery stores, and those who have to comply with the FDA's Menu Labeling regulations. Additionally, we will discuss how Genesis R&D helps you comply with the Menu Labeling regulations.

## **Genesis Professional Training | Feb 15-16, 2018 | Oak Brook, IL**

This training session covers the fundamentals of the Genesis R&D Food program: creating ingredients, building recipes/formulas, obtaining nutrition analysis, analysis reporting, best practices, and basic labeling features.

## **Advanced Genesis Workshop | Feb 21-22, 2018 | Oak Brook, IL**

This workshop session covers advanced topics in detail such as new FDA labeling regulations, due diligence and documentation for transitioning to the new labels, new program features, PDCAAS (protein digestibility score), range formulas, advanced labels, and more.

**Learn more:** <https://www.esharesearch.com/news-events/training-schedule/>



QUESTIONS?



## CONTACT US

Phone: 503-585-6242

Sales: [sales@esha.com](mailto:sales@esha.com)

Support: [support@esha.com](mailto:support@esha.com)

Consulting Services: [cs@esha.com](mailto:cs@esha.com)



## HELPFUL RESOURCES

LinkedIn: [linkedin.com/company/esha-research/](https://www.linkedin.com/company/esha-research/)

Blog: [esha.com/blog](http://esha.com/blog)

eNewsletter: [esha.com/esha-newsletter](http://esha.com/esha-newsletter)